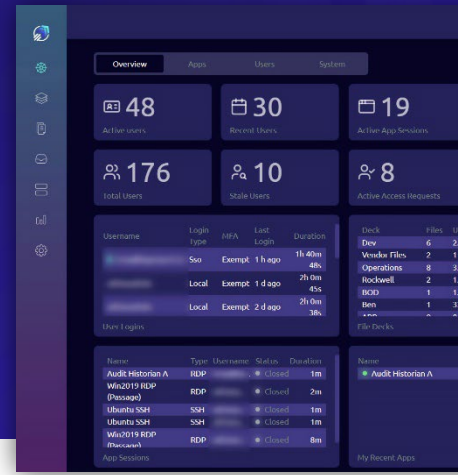


Secure User Access Protecting Critical Systems, Empowering Users



Transform your enterprise security with Hyperport's unified platform that seamlessly integrates Zero-Trust Network Access, Secure Remote Access, and Privileged Access Management into a single, powerful solution.

Hyperport simplifies secure access management across IT, OT, and hybrid environments, ensuring operational efficiency without compromising security.

The Hyperport Platform offers flexible deployment options to suit your business needs. With multi-tenant and multi-site support, along with high availability deployments, Hyperport ensures flexibility and resilience while integrating seamlessly with a wide range of security systems and tools.

Secure Network Access: Protect critical business systems across on-premises, cloud, and OT networks.

Remote Access & Collaboration: Secure access to industrial control systems (HMIs, SCADA, historians) and enable real-time collaborative troubleshooting.

Third-Party Management: Provide comprehensive auditing for OEMs, SMEs, MSSPs, and remote workers.

Forensic & Entitlement Management: Screen recording for training or incident response, and risk-based entitlement management.

Secure File Transfers: Critical system patching, operations, and telemetry transfers.

Compliance

Hyperport meets regulatory requirements, including NERC-CIP, CMMC, FIPS 140-3, DOE Cyber Baselines, FDA 21 CFR Part 11, ISA/IEC-62443, NIST, TSA SD02C, SOCI, NIS2, and OTCC-1.

Benefits

- **Enhanced Security:** Eliminate IP-based attacks, mask vulnerabilities, and implement risk-based user and device quarantine.
- **Operational Efficiency:** Navigate complex networks and layers with ease, leverage advanced business insights, and enable real-time collaboration.
- **Data Protection:** Secure bi-directional data transfer with FIPS 140-3 readiness.
- **Comprehensive Visibility:** Gain full control across IT, OT, and security systems using risk-based modeling.
- **Flexible Deployment:** Easily deploy in cloud, on-premises, or virtual environments, integrating seamlessly with your existing infrastructure.

Key Features

- **Multi-tenant Support:** Segment businesses or departments under one platform.
- **Advanced Auditing:** Tamper-proof audit logs with video recording, event capture, and access tracking.
- **Non-disruptive Deployment:** Works transparently with your existing infrastructure.
- **Flexible Access Methods:** Just-in-time access, least-privilege enforcement, MFA, and SSO for optimal security.

Deployment and Scalability

- Cloud, on-premises, hardware, and VM options.
- Available in U1 and IoT hardware sizes.
- Multi-tenant and multi-site deployments.
- High-availability configurations.
- Seamless integration with APIs, SIEM/log management, XDR, EDR, NDR, MDR, IDS, IDP, UBA systems, and more.

Discover how Hyperport can transform your user access strategy: [Schedule a Demo](#)